



# COVID-19 Vaccination Update 12.15.2020

SF COVID Command Center Health Services/ Ops and San Francisco Department of Public Health

Julie Stoltey, MD, MPH

Andi Tenner, MD, MPH

# ‘Real hope’ surrounding COVID vaccines ‘cannot be overstated’ – WHO chief

- Vaccines are coming. This is a historic moment in the COVID-19 pandemic.
- San Francisco Department of Public Health and San Francisco COVID Command Center are committed to following the national and state recommendations for prioritization and allocation of doses, with the goal of preventing morbidity and mortality resulting from this disease.

## San Francisco Chronicle

SFCHRONICLE.COM | Saturday, December 12, 2020 | CONTAINS RECYCLED PAPER | \$2.00 ★★★★★

# U.S. CLEARS VACCINE



# Vaccine Overview

	Pfizer	Moderna
Efficacy	95%	94.1%
Total # of participants	>43,000	>30,000
# COVID cases in placebo	162	185
# COVID cases in vaccinated	8	11
Significant safety concerns?	No	No
Planned # of vaccine doses available in 2020	50 million globally	20 million in U.S
Planned # of vaccine doses available in 2021	1.3 billion	500 million to 1 billion

NEJM Dec 10, 2020 DOI: 10.1056/NEJMoa2034577

Moderna data are from a press release—the actual study data are not yet available.



Centers for Disease Control and Prevention  
CDC 24/7: Saving Lives, Protecting People™

Advisory Committee on Immunization Practices (ACIP)



# Phases of Vaccine Rollout

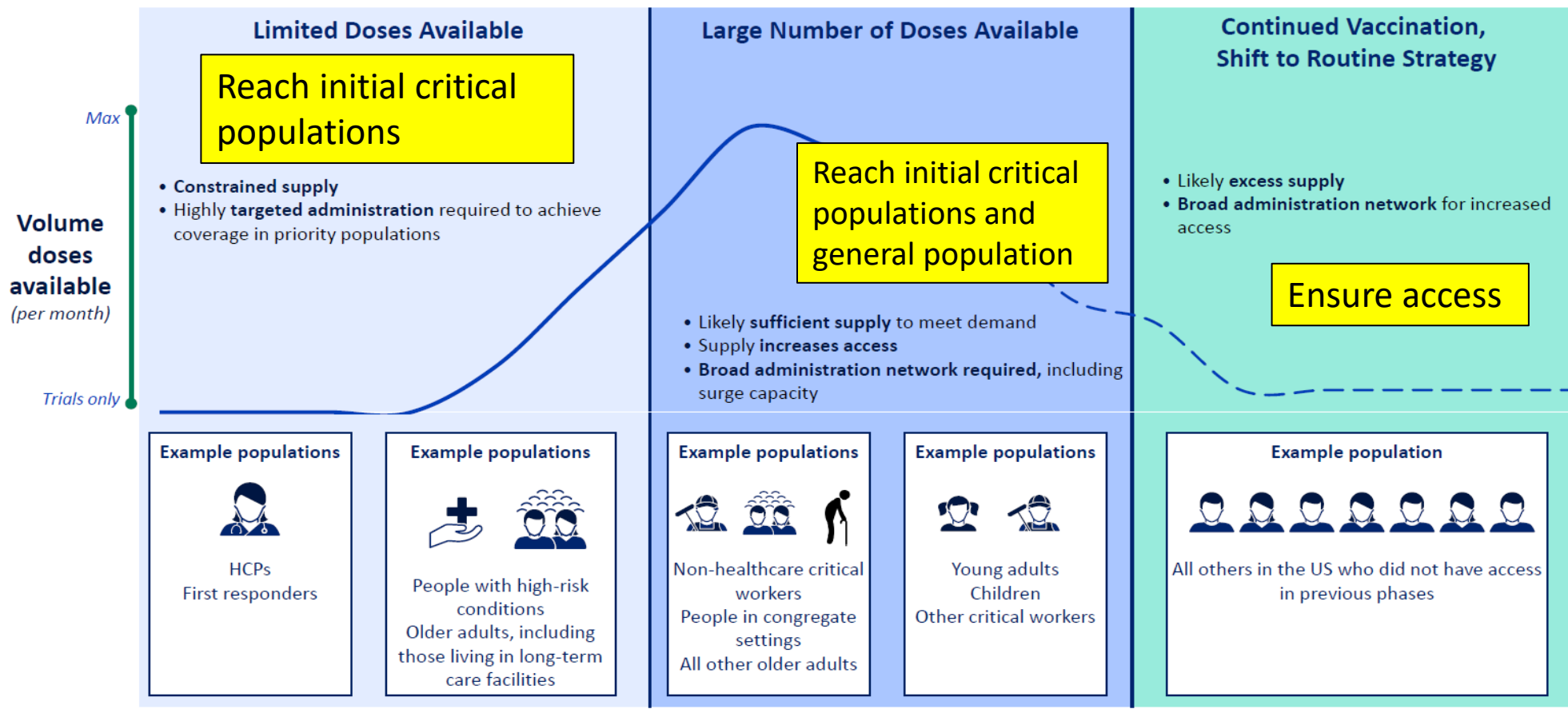
## Phase 1

## Phase 2

## Phase 3

*Illustrative scenario for planning purposes; will be adapted based on clinical / manufacturing information on all OWS candidates & vaccine prioritization*

### Distribution will adjust as volume of vaccine doses increases



Illustrative example populations; final prioritization to be decided by ACIP

# Phase 1A Prioritization—Directed by CDPH



Sandra Shewry  
Acting Director  
Erica S. Pan, MD, MPH  
Acting State Health Officer

State of California—Health and Human Services Agency  
**California Department of Public Health**



GAVIN NEWSOM  
Governor

D

**TO:** All Californians

**SUBJECT:** CDPH Allocation Guidelines for COVID-19 Vaccine During Phase 1A: Recommendations

## Recommendation A: Populations for Phase 1a

During Phase 1a of allocation, COVID-19 vaccine should be offered to the following persons in California:

- Persons at risk of exposure to SARS-CoV-2 through their work in any role in direct health care or long-term care settings.
  - This population includes persons at direct risk of exposure in their non-clinical roles, such as, but not limited to, environmental services, patient transport, or interpretation.
- Residents of skilled nursing facilities, assisted living facilities, and similar long-term care settings for older or medically vulnerable individuals.

## Recommendation B: Subprioritization During Phase 1a

- During Phase 1a, if there are not enough doses of COVID-19 vaccine for all who choose to receive them, then health departments should subprioritize doses as needed to match the level of available supplies in a sequential fashion using the following ranked categories:
  - Persons exposed through work in health care or long-term care settings, by:
    1. Type of facility or role
    2. Location of facility
    3. Attributes of individuals
- Health departments may reprioritize temporarily under limited circumstances described in Recommendation C.

## Recommendation B1: Subprioritization by type of facility or role

- If supplies are limited during Phase 1a, COVID-19 vaccines should be directed to as many tiers, and categories in each tier (e.g., hospitals) as possible to reach the prioritized populations.

<https://www.cdph.ca.gov/Programs/CID/DCDC/Pages/COVID-19/CDPH-Allocation-Guidelines-for-COVID-19-Vaccine-During-Phase-1A-Recommendations.aspx>



# Dose Allocation

Entities	Allocation Source	Details
Federal	Direct from Fed Gov't	VA, Indian HS, DOD, federal prisons
Federal	Direct from Fed, via CVS/Walgreens	SNF/LTCF Staff and Residents
CA State	Direct from CDPH	State hospitals and prisons
CA Multi-County Entities	Direct from CDPH, for distribution amongst its facilities	<ul style="list-style-type: none"><li>• Span <math>\geq 3</math> counties</li><li>• Can order, store, handle vaccine, and immunize without DPH support</li><li>• Allocation framework and prioritization will be the same as for other CA entities</li></ul>
Local Health Care Facilities	From SFDPH	All other facilities



Centers for Disease Control and Prevention

CDC 24/7: Saving Lives, Protecting People™



# Understanding the Pharmacy Partnership for Long-Term Care Program

CDC is partnering with CVS and Walgreens to offer on-site COVID-19 vaccination services for residents of nursing homes and assisted living facilities once vaccination is recommended for them.

- Pharmacies will:
  - Schedule and coordinate on-site clinic date(s) directly with each facility
  - Order vaccines and supplies
  - Ensure appropriate storage
  - Provide on-site administration
  - Report required vaccination data
- San Francisco skilled nursing facilities and other long-term care facilities are enrolled.
- Exact timing of when this program will start is not currently known.



# California/CDPH Plans



## Scientific Safety Review Workgroup (includes WA, OR, NV)

- Immunization, public health, academic and other subject matter experts will independently review the safety and efficacy of any vaccine that receives FDA approval for distribution

## Drafting Guidelines Workgroup

- Develop California-specific guidance for the prioritization and allocation of a COVID-19 vaccine

## Community Advisory Vaccine Committee

- Advise the state on advancing the principles of safety, equity and transparency in COVID-19 vaccine distribution and allocation

## COVID Vaccine Provider Enrollment, Ordering, and Management System



# Initial COVID-19 Vaccine Allocation to SF

- 13 boxes (12,675 doses) of Pfizer vaccine anticipated to be delivered 12/15-12/18
  - Boxes will be distributed amongst the acute care hospitals, with all hospitals receiving some doses
- There should be a second allocation of Pfizer vaccine coming to San Francisco soon
- Moving forward, the health systems (Kaiser, Sutter, Dignity, UC) will be designated 'multi-county entities' and will receive allocations directly from CDPH
- The VA will be allocated directly from the federal government
- 60 boxes (6000 doses) of Moderna vaccine have been allocated to SF initially, with anticipated delivery 12/23-12/28



# Challenges

- Vaccine characteristics
  - 2 doses, 3-4 weeks apart, must be same manufacturer
  - Ultra-cold/frozen
- Phased distribution
  - Anticipate weekly or biweekly allocations, however ongoing uncertainty related to frequency/amount of vaccine allocation
  - Must ensure transparency of the prioritization structure dictated by CDPH
  - Must have clear, widespread messaging
- Data management requirements



# Strategies

Storage	Allocation	Partners	Communication	Organization	Access
Ensure appropriate vaccine storage	Plan for allocation of vaccine through the health system based on the State's prioritization framework	Plan with health system partners for Phase 1 distribution <ul style="list-style-type: none"><li>• Hospitals</li><li>• Skilled Nursing Facilities (SNFs)</li></ul>	Develop a comprehensive communications plan with a focus on community outreach and engagement with an equity lens	Develop an IT and data support team to anticipate the need for documentation and monitoring	Plan for the need to fill gaps in the vaccine distribution system <ul style="list-style-type: none"><li>• Working with EMS/Fire to develop a mobile vaccination team</li><li>• Supplemental clinics if needed</li></ul>

# All hands on deck



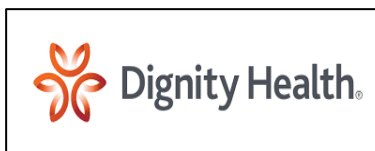
U.S. Department  
of Veterans Affairs



San Francisco  
Department of Public Health



CHINESE HOSPITAL





We're making history  
together!